

2,271 SQ FT | 3 BED | 2.5 BATH | 3-CAR GARAGE



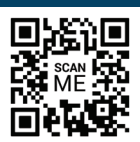
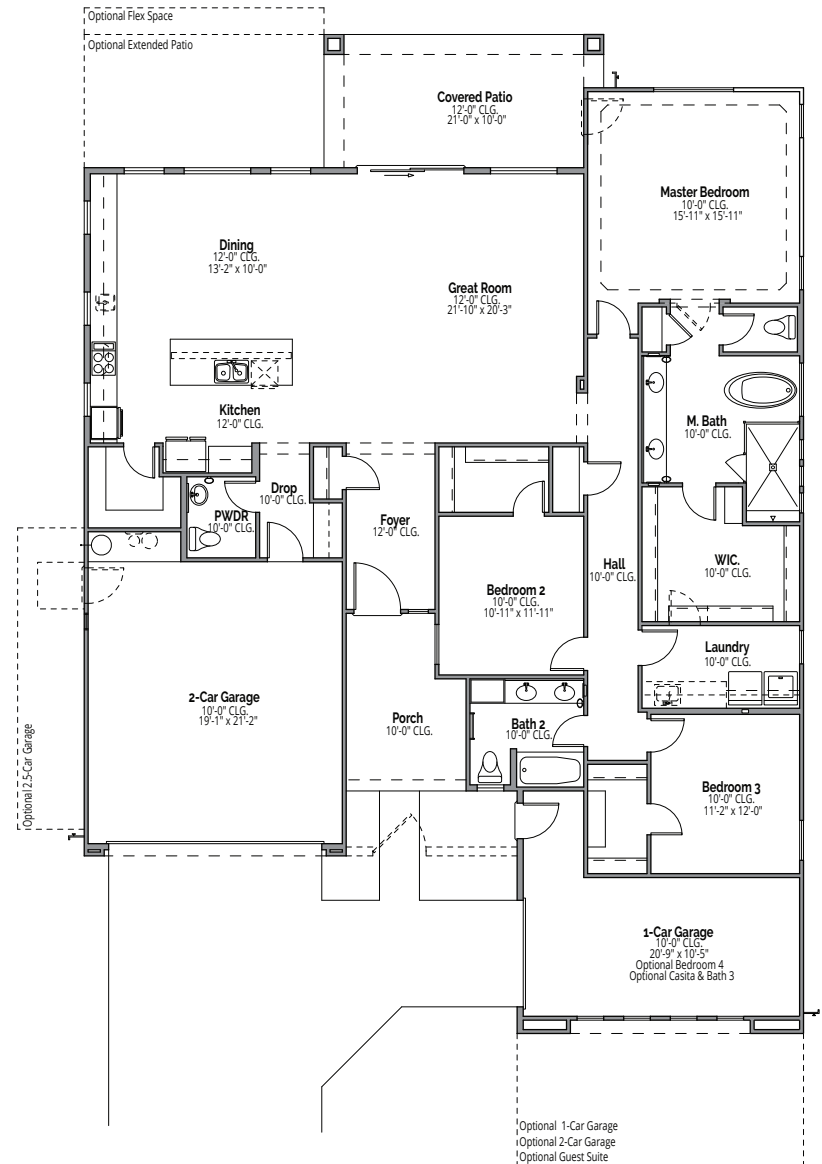
ELEVATION A



ELEVATION B



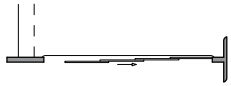
ELEVATION C



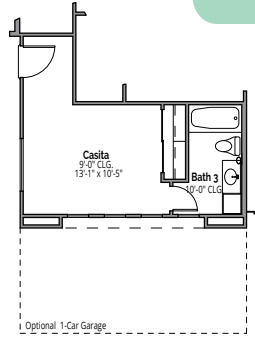
480-630-7285 • 13605 W. CRABAPPLE DR. PEORIA, AZ 85383

Floor plans, elevations, designs, materials and dimensions are subject to change without notice. Square footage and dimensions are estimated and may vary to actual construction. Floor plans and elevations are artist's conception and are not intended to show specific detailing. Information is believed accurate but not warranted. Prices and specifications are subject to change without prior notice.

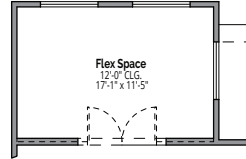
2,271 SQ FT | 3 BED | 2.5 BATH | 3-CAR GARAGE



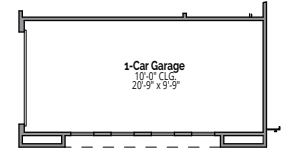
Optional Multi-Slide Door



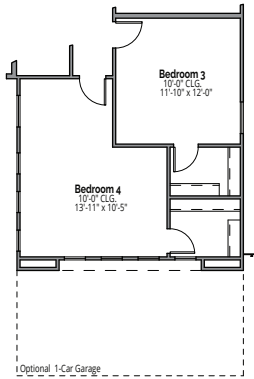
Optional Casita & Bath 3



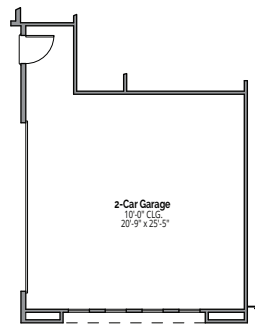
Optional Flex Space



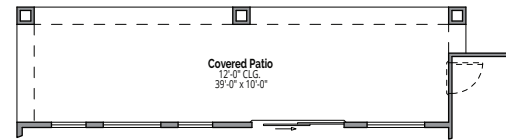
Optional 1-Car Garage w/ Bedroom 4
Optional Casita & Bath 3 SIM.



Optional Bedroom 4



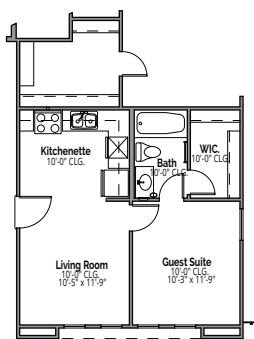
Optional 2-Car Garage



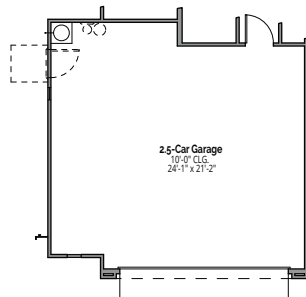
Optional Extended Patio

ELEGANCE FLOOR PLAN OPTIONS

- Optional Flex Space
- Optional 1-Car Garage w/ Bedroom 4
- Optional Casita & Bath 3
- Optional Extended Patio
- Optional Multi-Slide Door
- Optional Casita & Bath 3
- Optional Guest Suite
- Optional Bedroom 4
- Optional 2-Car Garage
- Optional 2.5-Car Garage



Optional Guest Suite



Optional 2.5-Car Garage



480-630-7285 • 13605 W. CRABAPPLE DR. PEORIA, AZ 85383

Floor plans, elevations, designs, materials and dimensions are subject to change without notice. Square footage and dimensions are estimated and may vary to actual construction. Floor plans and elevations are artist's conception and are not intended to show specific detailing. Information is believed accurate but not warranted. Prices and specifications are subject to change without prior notice.