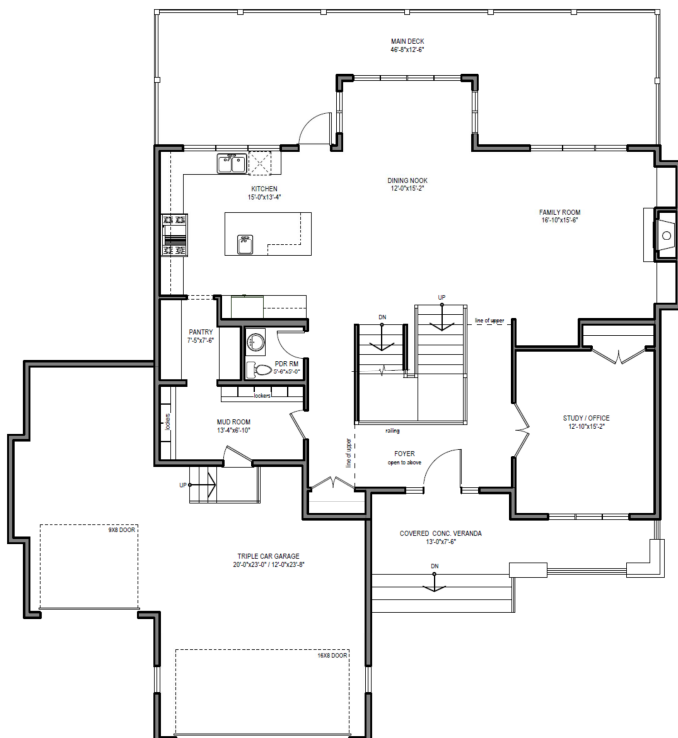


111 HILLSIDE TERRACE

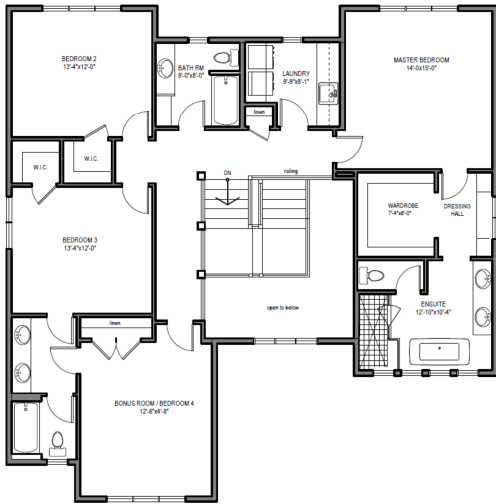
4,583sqft of luxury



MAIN LEVEL (1,622 sqft):

This bright and inviting home is steeped with traditional elements, with a focus on everyday practical living. The kitchen is large, classically designed - with timeless shaker white cabinets, farmer sink, dark granite, hickory floors and loads of space. Entertaining is made easy with the Jennair Pro series appliances - giving the kitchen a warm professional look.

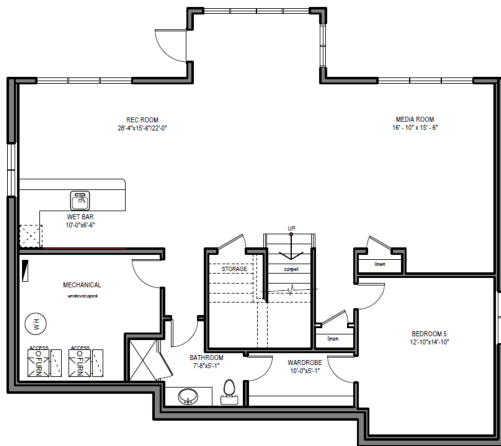
Other rooms include an oversized three car garage, practical spacious mudroom, walk through pantry, informal dining room, great room and office; all designed and decorated in the traditional shaker style. This home also features a spacious front porch and a large rear deck.



UPPER LEVEL (1,640sqft):

The upper level features a master suite designed for relaxation. Large windows open up to a fantastic mountain view. The walk in closet has custom millwork and loads of space. The ensuite is designed for peace and quiet; with a huge shower, beautiful wainscoting surrounding a large soaker tub, private loo and large vanity featuring cast iron sinks.

Three other large bedrooms and a laundry complete the upper level.



LOWER LEVEL (1,321sqft):

This warm and cozy walk out has the bright south west exposure, bringing in the natural light. Hydronically heated floors make the basement warm all year round. A private bedroom comes with a walk through closet and ensuite. The open concept basement also features a fully equipped wet bar, plus flexibility spaces for billiards, TV room, games room, etc.

FEATURES SUMMARY:

- Fantastic views and south west back exposure
- Walk out basement
- Private gate to park, pond and walk ways
- Oversized triple car garage
- Large 47' wide rear deck
- Jennair Pro Appliances
- Hickory Hardwood floors
- High end plumbing/lighting fixtures
- Loads of gorgeous custom millwork
- Solid core shaker doors
- Granite throughout
- Upper floor laundry w/washer & dryer
- Heated basement and garage floors
- Professionally designed and decorated
- High efficiency Carrier furnaces
- 80 gallon hot water tank
- Security system/Central Vac rough-in

