



FOR SALE

\$2,350,000

39 Watermark Road

WWW.WOLFCUSTOMHOMES.CA



*Modern and earthy elegance
on all three levels.*





*Clean and practical living for
today's busy families.*



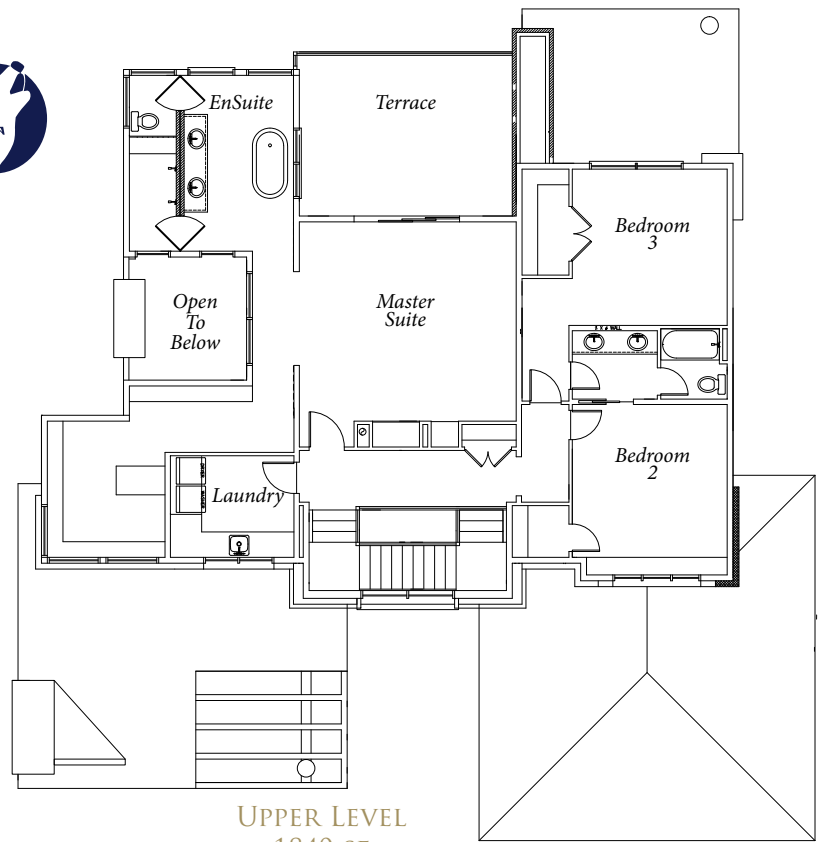




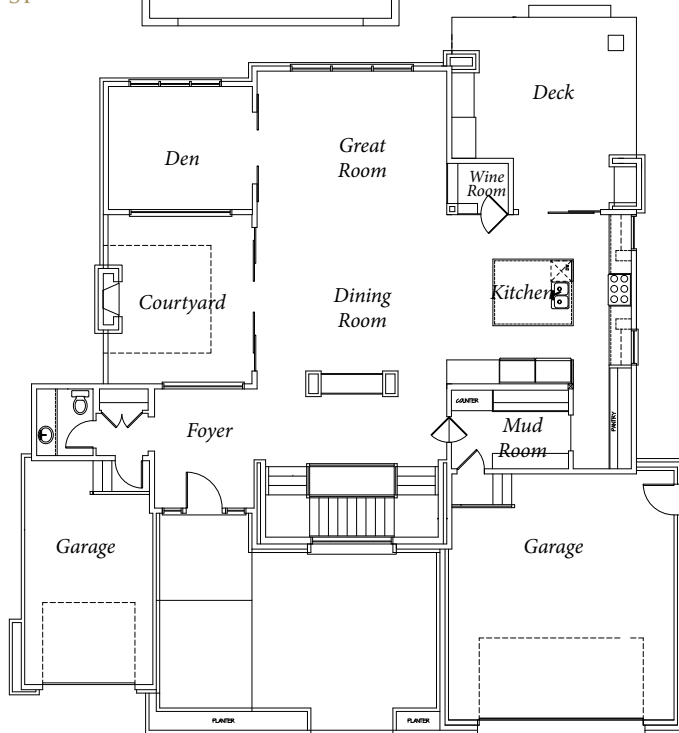




LOWER LEVEL
1675 SF



UPPER LEVEL
1840 SF



MAIN LEVEL
1791 SF

- Details:**
- Main level: 1,791 sf
 - Upper level: 1,840 sf
 - Lower level: 1,675 sf
 - 3+2 bedrooms
 - 4+1 bathrooms
 - 3 outdoor living areas
 - 3 fireplaces
 - 3 car garage

Information subject to change without notice. E&EO



CONTACT

Jaret Fry
jaretf@wolfcustomhomes.ca
403-874-9511

